



PRODUCT CATALOG

Welcome



OUR START

HoverTech was established in 1997 by founder and President, David T. Davis. Dave started HoverTech in a little home in east Allentown, PA, working 24/7 to make and sell his product, the HoverMatt® Air Transfer Mattress. With a passion for helping people, he knew that he could make a difference in the lives of patients and caregivers with this technology.

TODAY

HoverTech, an Etac company, is a leader in pressure injury prevention and safe patient handling and mobility for acute care and outpatient and home healthcare. HoverTech, creator of the HoverMatt® Air Mattress has changed the lives of patients and caregivers worldwide. We positively impact over 35,000 lives a day and growing - impacting over 20 people a minute.

HoverTech acute care products (e.g., HoverMatt PROS, HoverMatt SPU, HoverSling, HoverJack) are used hospital wide from the Emergency Department to the Intensive Care Unit to Labor and Delivery and the Operating Room. Our focus is on preventing staff musculoskeletal injuries, supporting patient safety and mobility while providing targeted interventions to address moisture, mobility, as well as friction & shear in order to maintain skin integrity to reduce the incidence of pressure injuries.

Patient handling and mobility products (e.g., Molift sit-to-stand aids Molift floor and ceiling lifts, Etac mobile shower commode chairs) are used across multiple care settings to provide a safe, consistent, and ergonomic method with which to transfer and lift individuals to prevent injuries to patient and staff.

Etac, Kista – Sweden, is a world-leading developer of innovative assistive devices and safe patient handling equipment and mobility products. Since 1973, Etac has been committed to improving quality of life for the individual, family members and caregivers. This commitment continues today, as it will in the future. Today, Etac is a global, multi-national company in over 70 countries. Etac has grown by acquiring companies who share our commitment and approach to innovation. The result is a unique portfolio of highly specialized product brands, Molift, Etac Clean and Immedia, all designed with the same dedication to form, function, and people.

In 2019, Etac made a significant investment in HoverTech. Etac brands Molift, Etac Clean and Immedia are now being offered in North America under HoverTech sales and marketing team. The combination of these world leading brands provides a consistent and safe experience across all care settings.

Contents

HoverMatt® PROS™ (Patient Repositioning Off-Loading System) 2-3

HoverMatt PROS Air
HoverMatt PROS Air Sling
HoverMatt PROS
HoverMatt PROS Sling

HoverMatt® SPU (Single Patient Use) 4-5

HoverMatt SPU
HoverMatt SPU Half-Matt
HoverMatt SPU Link
HoverMatt SPU Split-Leg
HoverMatt SPU Kits

HoverSling® SPU (Single Patient Use) 6

HoverSling Split-Leg
HoverSling Repositioning Sheet

Specialty Air Assist 7

Q2Roller®
SitAssist™ Pro
HoverMatt® T-Burg™

HoverMatt® Reusable Air Assist Devices 8

HoverMatt
HoverMatt Half-Matt

HoverJack® Patient Lift Devices 9

HoverJack
Evacuation HoverJack
EMS Evacuation HoverJack

Specialty Accessories 10

HoverCover™
Disposable Sheet

Wedges 11

Air Supplies 12

Carts 13

HoverMatt® PROS™

The HoverMatt® PROS™ (Patient Repositioning Off-Loading System) portfolio of air and non-air breathable, wipeable matts and slings, includes a HoverCover™ absorbent pad and is available kitted with HoverMatt® PROSWedge™ as a total solution to pressure injury prevention.

HOVERMATT® PROS™ Air

The HoverMatt PROS Air is an air-assisted device that reduces the pull force to move the patient by up to 90%. Link connecting straps attach to the bed frame reducing matt migration.

Weight capacity: 1,200 lbs. (544 kg)
Dimensions: 39"W x 78"L (99 cm x 198 cm)

Model Numbers

PROS-HM-CS (HoverMatt + HoverCover) 10 per case
PROS-HM-KIT (HoverMatt + HoverCover + HoverMatt® PROSWedges*) 3 per case



HOVERMATT® PROS™ Air Sling

The HoverMatt PROS Air Sling provides all the features of a HoverMatt PROS Air plus the added benefits of utilizing a repositioning, seated, and turning sling in one.

Weight capacity: 600 lbs. (272 kg) as a sling
1,200 lbs. (544 kg) air-assist
Dimensions: 39"W x 78"L (99 cm x 198 cm)

Model Numbers

PROS-HMSL-CS (Air Sling + HoverCover) 5 per case
PROS-HMSL-KIT (Air Sling + HoverCover + HoverMatt® PROSWedges*) 3 per case



HoverCover™

The disposable HoverCover™ absorbent pad (6.7L) is a breathable layer for all HoverMatts and HoverSlings. Moisture wicking keeps patients cool and dry while managing the microclimate.

Model Numbers

FULL

HMAC-100-CASE (50 per case) 39"W x 65"L (99 cm x 165 cm)

HALF

HTR-CHX-CASE (50 per case) 40"W x 40"L (102 cm x 102 cm)



*Wedge pair includes: 1 Wedge with Tail & 1 without Tail, Compressed

Patient Repositioning Off-Loading System

By targeting moisture, mobility, friction and shear, the system provides a solution to safely turn and reposition patients while reducing caregiver strain.



HOVERMATT[®] PROS[™]

The HoverMatt PROS is a full length, non-air slide sheet that reduces friction while providing a turn and position solution. The turning straps provide easy handling and leverage when placing wedges to off-load pressure on bony prominences.

Weight capacity: 550 lbs. (249.5 kg)
Dimensions: 40"W x 78"L (102 cm x 198 cm)

Model Numbers

PROS-SS-CS (Non-Air Slide Sheet + HoverCover) - 10 per case
PROS-SS-KIT (Non-Air Slide Sheet + HoverCover, + HoverMatt[®] PROSWedges*) 3 per case



HOVERMATT[®] PROS[™] Sling

The HoverMatt PROS Sling is a combination non-air slide sheet + sling. The sling straps can be connected to the bedframe reducing sling migration.

Weight capacity: 550 lbs. (249.5 kg) as a slide sheet
1,000 lbs. (454 kg) as a sling
Dimensions: 44"W x 78"L (112 cm x 198 cm)

Model Numbers

PROS-SL-CS (Non-Air Sling + HoverCover) 5 per case
PROS-SL-KIT (Non-Air Sling + HoverCover + pair of HoverMatt[®] PROSWedge*) 3 per case



HoverMatt[®] PROSWedge[™]

HoverMatt PROSWedge[™] assists caregivers with patient positioning and provides 30-degrees of off-loading for patients at risk for pressure injuries. The HoldFast[™] foam keeps the wedge properly placed under the patient and in place on the bed.

Model Numbers

PROS-W (5 pair per box) 16"L x 12" W x 6"H, 30° (41 cm x 30 cm x 15 cm)
PROS-WT* (5 pair per box)



*Wedge pair includes: 1 Wedge with Tail & 1 without Tail, Compressed

HoverMatt® SPU

The Single-Patient Use (SPU) products are made with highly breathable fabric, making them safe to leave under patients for all-day care.

HOVERMATT® SPU

The HoverMatt SPU air-assist mattress is indicated for single caregiver turning, boosting and repositioning, enhancing patient and staff safety.

Weight capacity: 1,200 lbs. (544 kg)

Model Numbers

HM34SPU-B (10 per box) 34" W x 78" L (86 cm x 198 cm)

HM39SPU-B (10 per box) 39" W x 78" L (99 cm x 198 cm)

HM50SPU-B (5 per box) 50" W x 78" L (127 cm x 198 cm)



HOVERMATT® SPU Half-Matt

The HoverMatt® SPU Half-Matt is 45" in length to provide a unique solution for cystoscopy, labor and delivery, gynecological, urological and orthopedic procedures.

Weight capacity: 600 lbs. (272 kg)

Model Numbers

HM34SPU-HLF-B (10 per box) 34" W x 45" L (86 cm x 114 cm)

HM39SPU-HLF-B (10 per box) 39" W x 45" L (99 cm x 114 cm)



HoverMatt Positioning Kit

The HoverMatt® Positioning Kit includes the HoverMatt® SPU, Disposable Positioning Wedges and HoverCover™ absorbent disposable cover, providing caregivers with all the tools needed to safely transfer, boost, position and offload patients without lifting or straining.

Kit contains: (1) HoverMatt SPU, (2) Positioning Wedges, and one pack of (5) HoverCovers.

Model Numbers

HPK-34SPU 34" W x 78" L (86 cm x 198 cm)

HPK-39SPU 39" W x 78" L (99 cm x 198 cm)

HPK-50SPU 50" W x 78" L (127 cm x 198 cm)

HPK-34SPU-HLF 34" W x 45" L (86 cm x 114 cm)

HPK-39SPU-HLF 39" W x 45" L (99 cm x 114 cm)



Single Patient Use

The HoverMatt reduces pull force required to move a patient by up to 90%, supporting caregiver safety and patient comfort during transfers, boosting, repositioning and proning.



HOVERMATT® SPU Link

The HoverMatt® SPU Link Air Transfer Mattress features all the benefits of the HoverMatt SPU combined with unique link straps that attach to the bedframe. Link straps reduce the frequency for boosting and improve patient comfort.

Weight capacity: 1,200 lbs. (544 kg)

Model Numbers

HM34SPU-LNK-B (10 per box) 34" W x 78" L (86 cm x 198 cm)

HM39SPU-LNK-B (10 per box) 39" W x 78" L (99 cm x 198 cm)

HM50SPU-LNK-B (5 per box) 50" W x 78" L (127 cm x 198 cm)



HOVERMATT® SPU Split-Leg

The HoverMatt® SPU Split-Leg Matt is a specialty transfer, turn, and positioning matt designed for use in the lithotomy position or on surgical tables when split-leg plates are employed.

Weight capacity: 1,200 lbs. (544 kg)

Model Number

HM34SPU-SPLIT-B (10 per box) 34" W x 70" L (86 cm x 178 cm)



Hovermatt SPU + HoverCover Kit

The kit includes the HoverMatt® SPU and a HoverCover™ absorbent disposable cover folded in one convenient, space saving package that reduces SKUs.

Model Numbers

HMHC-34 (10 Per Box) 34" W x 78" L (86 cm x 198 cm)

HMHC-39 (10 Per Box) 39" W x 78" L (99 cm x 198 cm)



HoverSling® SPU (Single Patient Use)

The breathable HoverSling SPU functions as both a breathable HoverMatt and a sling to streamline patient handling tasks and reduce time and money spent using multiple products.

HOVERSLING® Split-Leg

The breathable HoverSling® Split-Leg Device safely enables lateral transfers, boosting, turning, positioning, and vertical bed to chair transfers.

Weight capacity: 700 lbs. (317.5 kg)

Model Numbers

HMSLING-34-B (10 per box) 34"W x 70"L (86 cm x 178 cm)



HOVERSLING® Repositioning Sheet

The breathable HoverSling® Repositioning Sheet safely enables lateral transfers, boosting, turning, positioning, vertical supine and seated transfers.

Weight capacity: 1,000 lbs. (454 kg)

Model Numbers

HMSLING-39RS-B (5 per box) 39"W x 78"L (99 cm x 198 cm)

HMSLING-50RS-B (5 per box) 50"W x 78"L (127 cm x 198 cm)



Specialty Air-Assist Products

These products facilitate patient positioning and off-loading with ease in the ICU, MedSurg and Imaging Departments or utilize the HoverMatt T-burg to position and transfer in the OR without logrolling.

Q2ROLLER®

The Q2Roller facilitates single caregiver patient turns and offloading*, while reducing pressure and shearing that can occur with manual lifting techniques. The specialized valve allows for microturns while also providing the ability to inflate the opposite chamber to reduce pressure on the turn side.

Weight capacity: 600 lbs. (272 kg)

* With the side rails of the bed raised



Model Numbers

Q2R-100 8 per box

HTR-200 (Q2Roller + Half size HoverCover) 5 per box

Dimensions

Deflated Chambers: 44.5"L x 46.5"W (total) (113 cm x 118 cm)

Apron: 44.5"L x 72"W (113 cm x 183 cm)

SITASSIST™ PRO

The SitAssist Pro is a positioning device that gently lifts patients to a seated position or lowers them into a supine position prior to or after a diagnostic procedure. The radiolucent and MRI compatible SitAssist Pro supports caregiver safety and patient comfort.

Weight capacity: 600 lbs. (272 kg)

Model Number

SAP-200 (Each)



HOVERMATT® T-Burg™

The HoverMatt® T-Burg™ Matt is a specialty matt designed for safe Trendelenburg positioning and operates as an air-assisted device for safe lateral transfers.

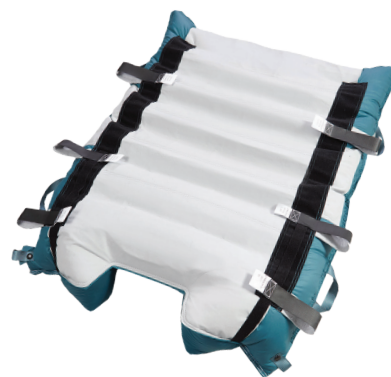
Weight capacity: 400 lbs. (181 kg) up to 40°

Model Numbers

HM-TBURG-34 5 per box

HM-TBURG-AP 5 pair arm protectors per box

HM-TBURG-34-KIT Kit includes 5 ea T-Burg Matts + 5 pair arm protectors



HoverMatt® Reusable Air-Assist Devices

The HoverMatt® is reusable and easily laundered, providing a sustainable and cost-effective patient care solution. HoverMatt is offered with a durable Heat-Sealed design or a Double-Coated version for additional fluid and stain resistance.



HOVERMATT®

The HoverMatt® is an air-assist device that reduces the pull force to move a patient by up to 90%. Transfer, boost, reposition and prone while protecting caregiver safety and patient comfort.

Weight capacity: 1,200 lbs. (544 kg)

Model Numbers

Heat-Sealed

HM34HS (Each) 34"W x 78"L (86 cm x 198 cm)

HM39HS (Each) 39"W x 78"L (99 cm x 198 cm)

HM50HS (Each) 50"W x 78"L (127 cm x 198 cm)

Double-Coated

HM34DC (Each) 34"W x 78"L (86 cm x 198 cm)

HM39DC (Each) 39"W x 78"L (99 cm x 198 cm)

HM50DC (Each) 50"W x 78"L (127 cm x 198 cm)



HOVERMATT® Half-Matt

The Reusable HoverMatt® Half-Matt is 45" in length to provide an effective solution for specialty surgical tables. This matt is ideal for use during cystoscopy, labor and delivery, gynecological, urological and orthopedic procedures.

Weight capacity: 600 lbs. (272 kg)

Model Numbers

Heat-Sealed

HMM34HS-MINI (Each) 34"W x 45"L (86 cm x 114 cm)

Double-Coated

HM34DC-MINI (Each) 34"W x 45"L (86 cm x 114 cm)



HoverJack® Patient Lift Devices

The HoverJack® allows caregivers to safely lift patients from the floor to a bed or a stretcher, providing a safe solution for fall recovery. Pair with the HoverMatt for safe lateral transfers after recovery. HoverJack Evacuation & EMS facilitate emergency evacuations in the field or hospital.



HOVERJACK®

The HoverJack® Air Patient Lift allows caregivers to safely lift patients who have fallen without a lift team. The HoverJack inflates to lift patients from the floor to a bed or a stretcher in a supine position, reducing the risk of injury for patients and caregivers.

Weight capacity: 1,200 lbs. (544 kg)

Model Numbers

HJ3202T (Each) 32"W x 72"L (81 cm x 183 cm)

HJ3902T (Each) 39"W x 77"L (99 cm x 196 cm)



HOVERJACK® Evacuation

The Evacuation HoverJack® is an emergency stairwell evacuation solution designed for patients who cannot be evacuated using a bed mattress. The specially designed safety straps and foot-end pouch hold the patient securely, while the Teflon-coated bottom allows for easy transport across most surfaces and down stairs.

Weight capacity: 1,200 lbs. (544 kg) for vertical lifts.
700 lbs. (318 kg) for stairwell evacuations.

Model Number

HJ32EV (Each) 32"W x 72"L (81 cm x 183 cm)



HOVERJACK® EMS Evacuation

The EMS Evacuation HoverJack® is an air-assisted transport, lift, and stair evacuation solution that minimizes the challenges EMS crews face in transporting patients. The reinforced, replaceable bottom chamber skirt and harness-style safety straps make this version appropriate for the heavy demands of EMS teams.

Weight capacity: 1,200 lbs. (544 kg) for vertical lifts.
700 lbs. (318 kg) for stairwell evacuations.

Model Number

HJ32EV-2 (Each) 32"W x 72"L (81 cm x 183 cm)



Specialty Accessories

The following accessories support enhanced applications using HoverTech products in any department.

HoverCover™

The HoverCover™ absorbent pad provides a breathable layer that maintains and manages the microclimate by absorbing and wicking away up to 6.7L of fluid.

Model Numbers

FULL

HMAC-100-CASE (50 per case) 39"W x 65"L (99 cm x 165 cm)

HALF

HTR-CHX-CASE (50 per case) 40"W x 40"L (102 cm x 102 cm)



Disposable Sheet

The Disposable Sheet is a non-permeable sheet that can be removed from under a patient when pulled apart from the center. It is intended to keep surfaces from becoming soiled especially in high fluid areas.

Model Number

HMDS3-CASE (100 per case) 43"W x 86"L (109 cm x 218 cm)



Wedges

HoverTech's Positioning Wedges provide the optimal solution for pressure injury prevention. With high density foam and covers specially designed to stay in place under the patient, the wedges off-load the sacrum providing an effective Q2 protocol.

HoverMatt® PROSWedge™

The single patient use HoverMatt PROSWedge™ assists caregivers with patient positioning and off-loading to deliver a 30° turning angle for patients at risk for pressure injuries. The HoldFast™ foam keeps the wedge properly placed under the patient and in place on the bed. The optional tail assists with wedge placement and minimizes migration.

Model Numbers

PROS-W (5 pair per box) 16"L x 12" W x 6"H (41 cm x 30 cm x 15 cm)

PROS-WT* (5 pair per box)

*One with tail (per pair)



Disposable Positioning Wedges

The single patient use positioning wedges are made of high resiliency foam supporting a 30° position that provides effective sacral off-loading. A non-slip cover holds the wedge in place.

Model Number

FPW-100 (5 pair per box) 15"L x 14"W x 7"H (38 cm x 36 cm x 18 cm)



Reusable Positioning Wedges

The 30° reusable wedges have a Dartex® cover with heat-sealed seams for added infection control while the contour cut foam permits air circulation between the wedge and patient. The Bariatric version contains a convex surface on the patient and caregiver sides for more support with an extra-firm core topped with plush memory foam for enhanced comfort and pressure redistribution.

Model Numbers

FPW-R-15S (Each) 15"L x 11"W x 7"H (38 cm x 28 cm x 18 cm)

FPW-R-20S (Each) 20"L x 11"W x 7"H (51 cm x 28 cm x 18 cm)

FPW-RB-26S (Each) 26"L x 12"W x 8"H (66 cm x 30 cm x 20 cm)



Air Supplies

HoverTech Air Supplies are compatible across the HoverMatt®, HoverJack®, and HoverSling® portfolio. The variable speed feature on the HT-Air® is specific to the Q2Roller® and SitAssist™ Pro.

HT-Air® 1200

The HT-Air® 1200 Air Supply offers two air flow speeds and a variable speed air flow option. The HT-Air 1200 can be used with our full range of products to maximize product efficiency.

Model Number HTAIR1200 (Each)



Air400G

The Air400G Air Supply offers rapid inflation of HoverMatt, HoverSling and HoverJack products.

Model Number AIR400G (Each)



MRI Hose

The 25' (7.6 m) MRI Hose enables the use of HoverMatts, HoverSlings, or SitAssist in an MRI environment by keeping the air supply out of the imaging environment. The MRI hose is compatible with the HTAIR1200 and Air400G.

Model Numbers HTA-MRI (Each) - for HTAIR1200 AS-MRI (Each) - for Air400G



Air Supply Hose Covers

The Air Supply Hose Cover is a convenient, disposable cover that protects the entire length of the Air Supply Hose from soiling. It is especially useful for infection control and high fluid areas. The Air Supply Hose Cover is compatible with all HoverTech air-supplies, including the 25' (7.6 m) MRI hose.

Model Number AS-HC (25 per package)



HT-Air Wall Mount Basket

The HT Air Wall Basket is a convenient storage solution for air supply placement.

Model Number HMC-U-UB



Carts

HoverTech carts allow for easy transportation and storage of air supplies, HoverMatts, HoverJacks, HoverSlings, and other HoverTech products.

HoverMatt® Universal Cart

The HoverMatt® Universal Cart is designed to hold all HoverTech air supply models and one box of HoverMatt SPU's or several HoverMatt Reusable matts.

Model Number **HMC-U** (Each)



HoverJack® Cart

The HoverJack® Cart is a rolling storage system that allows caregivers to quickly respond in the event of a patient fall. A standard size top basket and large bottom basket hold a HoverJack Air Patient Lift, Air Supply, and a HoverMatt Air Transfer Mattress.

Model Number **HJC-200** (Each)



HoverJack® Battery Cart

The HoverJack® Battery Cart offers a durable, ergonomic solution for portability and storage of any HoverJack device and HoverTech Air Supply. The built in rechargeable battery creates an all-in-one resource for your rapid response team.

Model Number **HJBSC-300** (Each)

Replace the battery on pre-existing HoverJack Battery carts with a retrofit kit (battery and bracket), available for purchase separately.

Model Numbers **HJBSC-BATTERY** (Each)
 HJBSC-BRACKET (Each)



The availability of products listed in this catalog is subject to change without notice. Some items may be temporarily unavailable, discontinued, or no longer in production. For current availability, delivery schedules, recommended substitutes, or technical assistance, please contact Customer Service at 1.800.471.2776 or www.HoverTechInternational.com. For warranty information, please see our website at hovertechinternational.com/standard-product-warranty/.



4482 Innovation Way
Allentown, PA 18109

800.471.2776
Fax 610.694.9601

www.HoverTechInternational.com
Info@HoverTechInternational.com